

SUBTOTALS - C/OH

FORM C/OH
COVER SHEET PG 3

19 FILER NAME Matthew Fred Womble	20 Filer ID (Ethics Commission Filers) N/A
21 SCHEDULE SUBTOTALS NAME OF SCHEDULE	SUBTOTAL AMOUNT 0

38 ,8+6 2 8\$. 3 %0183(8)

8 8 " 7 48 18 8#58 -8 *' / 8

†i Ö~Äæab aióó: ÝQ i«"i

œi ±»/E@E Ci

* G 5 1 I L ' D 4 / L 2 L

<i ²T\.%i"i x-Ä;> i ²de?j@ ²pii

! L

•i)!* 0" 0-) / 0 " &

L

=i © 6 i/i i

; (ãmi b| •i

' i; Ä 7r•i

L + H 6 3 J B ? L = 4 L

&' () ! " # \$ %
É -i Ú "i i %..i k , .e i

½«i i
äi5 0i
ciÚÐ ?i

ç il ç»•i & pš i

%%äfaä4TÜÄ i

1/£i

;•i î^ q 3æšri ri „i Ä ði Òx ýÖ i ½©• a8i

‡<î-f"W p 4i, Mi -/E`n A2 - i

^•i B ¶•Ó i /i j Si

;=i

¥<NöViz# i 7 #iæO-Li [,fO i B m[^U\$ú i
ÿ i zF i bg]nóÉM! ©9i

X i

%o'i

¾ ')+Éx¿)(i

4i £€ gi ¶ ç5i{•iÝs€i

8 98:; < = > ? @ A B C 3 D E F G H G I J K L M G G L M N M O P Q
Š"i. -l e i ad i êœi É -i Ú Q& i

s hi Ž NJñT i

Ī_Q ÷ C *Y ði \$ i {G!"i ¾~P R ‡Y~9i

Ž(i @h" è i,#.i ¿5á R! ° i

B-íi /U i (ni b}\$4i

' è iç, 6i |t:i

ijiki Nöövwpqz6{|| M k 9† ¶NjŠ ←E@E'K Lž, X, & X ←•.1/4 1

cV tK%^i
i6 i
D dŌ ßŌ ?i

' 1 _i ¾>i

AU i q

a >i ÚD•i &i

Ái ±iž i

ÉéÚi éÇ'i

Ð> uøE'p è\$, i Ä ò\$Ø iG(PÄvÄ5o w²8i

~i3 q i),)Mi Á\$ F! # i

a ."Ö i 1ī..._ h*ŸWi

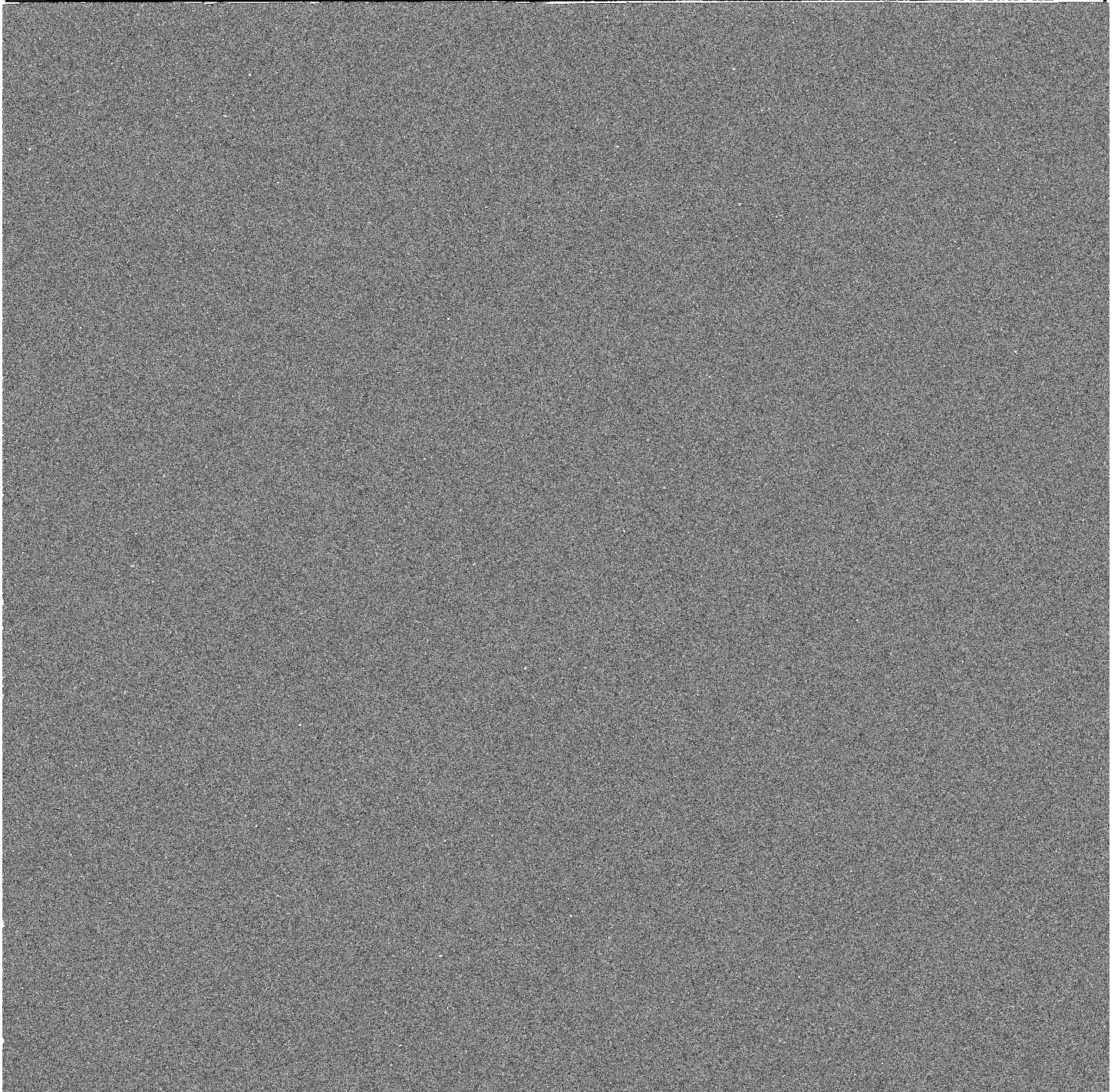
&=+ùVQZi# Xi àXL#i i \! i S ìSlüYi
i F,.iÄY³g™o H!1b i

,Ø H)+i

ì k i 0,7,É,Ä,Ç,Ö,PK,EP,Ō,Ä,EP,es,Ō,ç,n,È,•,0°Ä,1,Ō,x KX,àÉ#F

" (' # & ((

Accounting/Banking



**CANDIDATE / OFFICEHOLDER REPORT
DESIGNATION OF FINAL REPORT**

FORM 501-FR

The Instruction Guide explains how to complete this form.

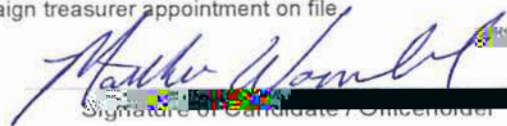
-- Complete only if "Rep" is checked --

1 C/OH NAME
Matthew Fred Womble

2 Filer ID (Ethics Commission Filers)
N/A

3 SIGNATURE

I do not expect any further political contributions or political expenditures in connection with my candidacy. I understand that designating a report as a final report terminates my campaign treasurer appointment. I also understand that I may not accept any campaign contributions or make any campaign expenditures without a campaign treasurer appointment on file.



Signature of Candidate / Officeholder

4 FILER WHO IS NOT AN OFFICEHOLDER

-- Complete A & B below *only* if you are not an officeholder. --

A. CAMPAIGN FUNDS

Check only one:

- I do not have unexpended contributions or unexpended interest or income earned from political contributions.
- I have unexpended contributions or unexpended interest or income earned from political contributions. I understand that I may not convert unexpended political contributions or unexpended interest or income earned on political contributions to personal use. I also understand that I must dispose of unexpended political contributions and unexpended interest or income earned on political contributions in accordance with the requirements of Election Code, § 254.204.

B. ASSETS

Check only one:

- I do not retain assets purchased with political contributions or interest or other income from political contributions.
- I do retain assets purchased with political contributions or interest or other income from political contributions. I understand that I may not convert assets purchased with political contributions or interest or other income from political contributions to personal use. I also understand that I must dispose of assets purchased with political contributions in accordance with the requirements of Election Code, § 254.204.

Signature of Candidate

5 OFFICEHOLDER

-- Complete this section *only* if you are an officeholder --

I am aware that I remain subject to filing requirements applicable to an officeholder who does not have a campaign treasurer on file. I am an officeholder, I retain political contributions, interest or other income from political contributions, or assets purchased with political contributions or interest or other income from political contributions.



Signature of Officeholder